

HAND GUN ASSISTANT

MAINTENANCE AND CLEANING FIXTURE



Supports the weapon while freeing both hands.

Hand guns can be securely supported in a solid fixture for all disassembly and cleaning procedures. Semi auto pistols fit over a mandrel that slides into the magazine cavity. Revolvers can be secured by either fitting the barrel into “V” blocks or fitting the grip into a padded self centering vise.

Always make a visual and tactile examination of your weapon to insure that it's unloaded before using this fixture.

In the course of shipping and packing, parts may end up missing or damaged- call us at 631.673.5975. 8:30 a.m. - 5:00 p.m. Eastern Time. We will promptly send replacements.

Always observe basic safety precautions when working on a gun including, but not limited to:

- A. Make a visual and tactile examination of the weapon.
(Stick your finger in the chamber to make sure the weapon is unloaded).
- B. Wear appropriate safety gear such as, safety glasses, gloves, etc.

The HYSKORE® #30101 Handgun Service Fixture frees up both hands while firmly supporting the weapon. The pivoting and swiveling head can be locked into a wide range of positions to allow access to any point on the gun. The base can be stabilized with the 4 leveling jacks or secured to a platform or bench top using the anchor points.

To work on a semi automatic pistol choose the appropriate mandrel, (the three larger ones have a size adjustment feature to facilitate a snug fit in the magazine cavity). Fix the mandrel to the swivel head and slide the gun's magazine cavity over it. You can now use both hands to disassemble the gun.

For revolvers, fit the self centering vise to the swivel head and use the foam "V" blocks to firmly grip the barrel or simply clamp on the grip without using the "V" blocks. Either way, you are now able to use both hands to work on the gun.

MAGAZINE DIMENSIONS FOR POPULAR PISTOLS					
IN MILLIMETERS					
			D	W	Mandrel
A. .45 Cal					
1. 1911 Colt	*	SS	13.8	13.8	30101-1
2. 1911 OEM		SS	13.8	13.8	30101-1
3. HK	**	DS	25	25	30101-3
4. Glock		DS	25.1	25.1	30101-3
B. .40 Cal					
1. SW 4006		DS	20.1	20.1	30101-4
2. Beretta #96		DS	20.5	20.5	30101-4
3. Springfield H.P.		DS	22.1	22.1	30101-4
C. 9mm					
1. SW		DS	20	20	30101-4
2. Browning H.P.		DS	20	20	30101-4
3. Glock		DS	23	23	30101-4
D. .22 LR					
1. Bro. Buckmark		SS	9.2	9.2	30101-2
2. Ruger		SS	9	9	30101-2
3. EAA		SS	9.2	9.2	30101-2

* Single Stack ** Double Stack

BASE ASSEMBLY



Thread the 16 mm rod from the top of the side of the base until it is flush with the bottom - Thread a 16 mm hex nut onto the rod about 3" before starting. This will save you from having to run the nut all the way down the rod. Fit the levelers and locking collars to each corner of the base.



Tighten the hex nut (8-10 lbs/ft of torque) to lock the shaft into place.



Place the trim collar and one bearing set over the shaft as shown.

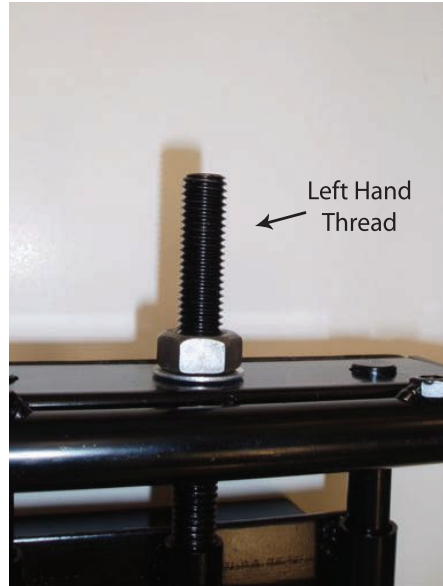


Slide the swivel head over the shaft. Place the other bearing on top and thread on 2 x 16 mm hex nuts hand tight. Thread the 2 x 8 mm locking knobs into the threaded holes in the collar of the swivel head.

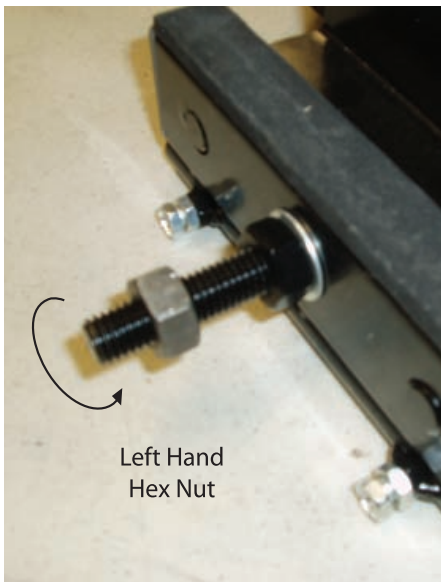
VICE ASSEMBLY



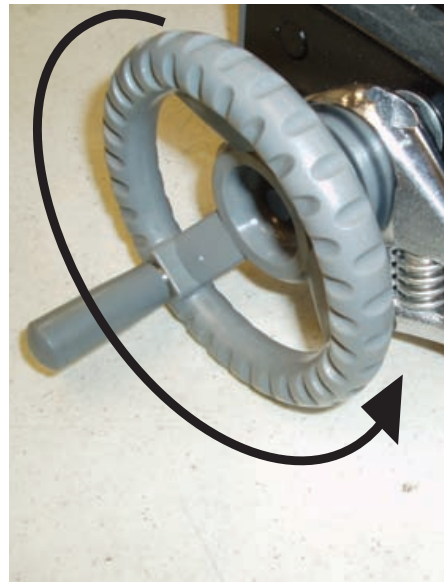
Tighten the lower hex nut until there is no slack but the swivel head turns freely. Hold that nut in place with a wrench and tighten the upper nut with another wrench. This will lock everything in place.



Pay close attention to this step!!! To avoid damage, the hand wheel for the vise is not factory installed. Important both the hand wheel and the lock nuts that keep them fixed in place are M12 left hand thread. This means that they must be turned counter clockwise to engage and thread together.



The left hand nuts have a yellow finish and are packed in the same package as the hand wheel - It would be a good idea not to misplace them. By turning counter clockwise, thread a nut on to the screw shaft of the vise.



Now, also by turning counter clockwise, thread a hand wheel on to the screw shaft until 1/8 - 1/4" of shaft is visible. Turn the nut from Step 12 until it contacts the hub of the hand wheel. Grasp the hand wheel in one hand, grasp the nut with a wrench. Using hand pressure, tighten the hand wheel against the nut until snug. - Repeat if the hand wheel loosens. You can also use locktite for a more permanent installation.

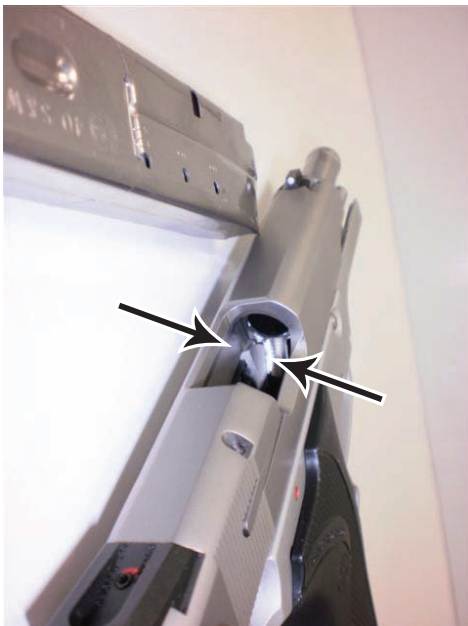
SEMI AUTO PISTOLS



To fit a mandrel for a pistol to the pivot head, insert the stud on the mandrel through the hole on the top of the swivel head and secure with a lock knob and tooth washer.



Magazine cavities on popular size pistols are very close in size (because popular ammunition is made to exact size) but vary slightly. Therefore, we have sized the mandrels to fit the smallest size in a particular group. To make a snug fit in a larger size cavity, back out the adjusters with a #2 Phillips screwdriver until the desired fit is achieved.

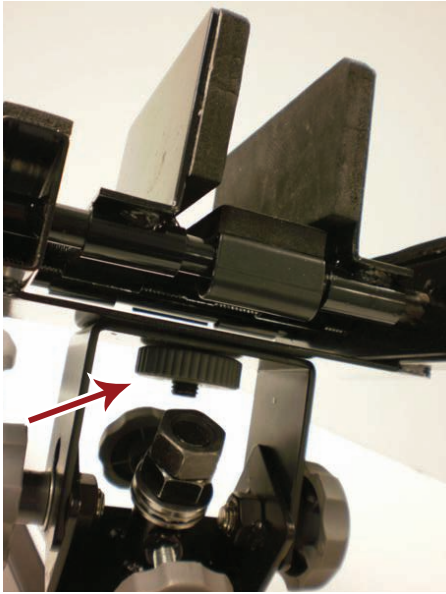


With the magazine removed and the slide locked back, make a visual and tactile (stick your finger in the chamber) examination to insure that the gun is unloaded. This is a necessary step as many pistols do not have magazine disconnects and/or they may not function.



Slide the pistol over the mandrel.

REVOLVERS



Put the stud on the vise through the hole on top of the pivot head and secure with the lock knob and a tooth washer.



make a visual and tactile examination of the revolver to insure that it is unloaded before securing it in the vise.



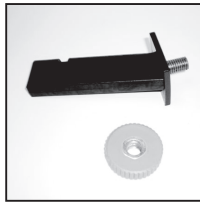
The vise is equipped with foam barrel blocks. Use these to grip the barrel of a revolver. Do not put a hot gun in the vise - Max temperature is 150° F. To grip the butt of a revolver, remove the grips from the gun to provide flat parallel surfaces and use the vise without the "V" blocks.



Place a tooth lock washer as shown (between) the washer and pivot head. This is necessary to hold the vise securely.

• REPLACEMENT PARTS •

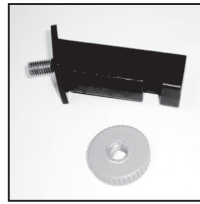
These are replacement parts for purchase. Pictures do not represent contents of set.



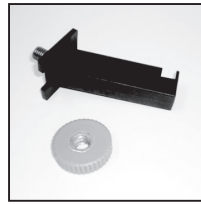
30101-1



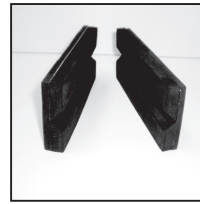
30101-2



30101-3



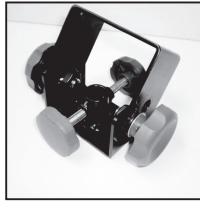
30101-4



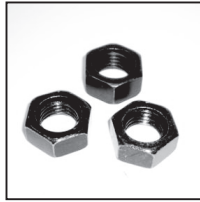
30101-5



30101-6



30101-7



30101-8



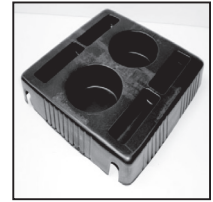
30101-9



30101-10



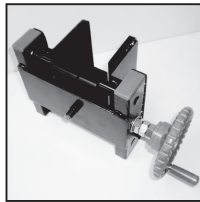
30101-11



30101-12



30101-13



30101-14



30101-15



30101-16

Parts List & Pricing:

30101-1	1911 Mandrel & Lock Knob	\$ 10.00
30101-2	.22 Mandrel & Lock Knob	\$ 10.00
30101-3	.40/.45 Double Stack Mandrel & Lock Knob	\$ 10.00
30101-4	9 mm Double Stack Mandrel & Lock Knob	\$ 10.00
30101-5	Foam Barrel Blocks	\$ 7.50
30101-6	Pivot Lock Bolts 2 x M12 & 2 x M8	\$ 12.50
30101-7	Swivel Head Assembly	\$ 37.50
30101-8	M-16 Hex Nuts 3 pc	\$ 7.50
30101-9	Thrust Bearings - 2 sets	\$ 15.00
30101-10	Center Column & Trim Collar	\$ 12.50
30101-11	Level	\$ 5.00
30101-12	Utility Tray	\$ 7.50
30101-13	Vise Floor Pad	\$ 10.00
30101-14	Vise Assembly - Complete	\$ 45.00
30101-15	Hand Wheel & M12 LH Nut	\$ 12.50
30101-16	Leveling Jack & Lock Knob	\$ 7.50

Send Check or Money Order with Phone Number to:

Hyskore® / Power Aisle, Inc.

P.O. Box 983

Middleburgh, NY 12122

NYS Resident add 8.75% Sales Tax (Or Prevailing Rate)

** \$10.00 Shipping & Handling to Lower 48 States**

** \$25.00 Shipping & Handling to Alaska, Hawaii, Puerto Rico**

HAND GUN ASSISTANT

MAINTENANCE AND CLEANING FIXTURE

Hyskore®

www.hyskore.com



WARRANTY AND DISCLAIMERS

HYSKORE®/Power Aisle, Inc. guarantees that its products are free from defects in material and workmanship for a period of 90 days from the original date of purchase. For electronic items (anything that requires a battery), the warranty period is also 90 days. This Warranty applies to non-commercial use only. Commercial use voids this warranty. In the event of any defects in material or workmanship, HYSKORE®/Power Aisle, Inc.'s sole liability therefore shall be the replacement of any such product(s) and/or components that are defective in material or workmanship. The replacement of any such product(s) and/or components shall be HYSKORE®/Power Aisle, Inc.'s sole responsibility. This warranty specifically excludes any and all consequential or accidental damages. No other warranties or liabilities whatsoever are either expressed or implied. If any such warranties shall be imposed by law, notwithstanding this provision, then such warranties shall be the responsibility of HYSKORE®/Power Aisle, Inc.'s immediate buyer. There shall be no warranties of merchantability, use of trade, or fitness for a particular purpose. Alteration of any product, misuse, or exceeding any stated product limitations voids this warranty. All returns, adjustments, etc. are the responsibility of the retailer/dealer that sold the product. HYSKORE®/Power Aisle, Inc. handles return issues through its dealers. It should be obvious when using some of these products that approved protective safety gear, including, but not limited to, eye and ear protection, should be utilized. Using the appropriate safety gear is the sole responsibility of the person(s) using the product. It should also be obvious that certain products such as silica gel, etc. must not be consumed, inhaled or taken internally. The user takes full responsibility for inappropriate or incorrect use of these items. In the event an inadvertent event takes place, Material Safety Data Sheets (MSDS) are available on the HYSKORE® website. www.hyskore.com. We do not sell guns, scopes, ammunition, cleaning accessories, etc. These accessories are used in many of our product pictures, as props to illustrate how the products are used. As such, they are not included with any product. All photographs, drawings, copy, instructions, etc. are the exclusive property of HYSKORE®/Power Aisle, Inc. All downloadable files are intended for the use of the end user of HYSKORE®/Power Aisle, Inc.'s products and cannot be reproduced without the express written permission of HYSKORE®/Power Aisle, Inc.