

Hyskore®

30265

Compact Revolver Grip Light

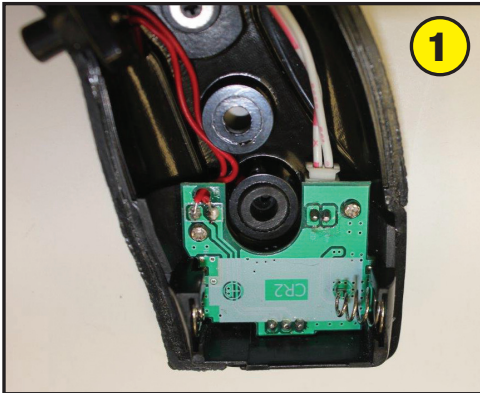


The HYSKORE® compact revolver Grip Light gives the user the advantage of having one hand free and still being able to have both a lighting device and the ability to use their weapon if necessary. Not only is it like having an extra hand, it projects the light directly onto a potential target. With over 100 lumens of light in a focused beam potential threats within the typical 5 to 7 yard engagement range are amply lighted.

Introduction

The Grip Light was developed based on comments from a retired San Diego, California law enforcement professional. The officer indicated that in many situations it would be advantageous to have both his weapon and illumination device in the same hand, thus leaving his other hand free. He further indicated that he and many of his associates carried a Smith & Wesson J Frame as their back up weapon of choice. Further research revealed that the J Frame and its various configurations is not only currently manufactured in 39 different models by Smith & Wesson, it is also the single most popular small frame revolver ever manufactured. It became apparent that for both law enforcement and civilian applications a lighting device that could be integral with the gun and operated in conjunction with the weapon, would provide a tactical advantage for the user.

The HYSKORE® Compact Revolver Grip Light is not a conventional add on such as lights attached to an accessory rail or frame of the gun. It is, in fact, a complete replacement grip assembly that houses the electronic circuitry, the battery, and a light module powered by a super bright CREE® LED diode. The frame is constructed from die cast aluminum, is light weight (4.2 oz.), and has tactile thermoplastic rubber (TPR) inserts along with diamond checkering in the aluminum to provide a comfortable surface with excellent traction. Not only is the aluminum light weight and strong, it also acts as a heat sink to wick away the heat generated by the LED. This allows the light to be on for extended periods without excessive heat build up. The J Frame accessorized with the Grip Light easily fits into a pocket or any one of numerous conventional holsters that are commercially available. The Compact Revolver Grip Light is the ultimate accessory for the J Frame Revolver.



Using a screwdriver, carefully remove the existing grip panels from your J Frame revolver.

Now insert the battery into the Grip Light. The green PC board underneath the battery location is marked + and -. Install the battery accordingly. (- end goes against the spring.)



Now install the larger half of the grip light onto the grip frame of the revolver as shown. Please refer to the next step for positioning.



Almost all J Frame revolvers have a referencing / positioning pin towards the butt end of the grip frame. This pin, of course, is used to correctly position the grip halves and it also prevents them from moving during recoil. Both halves of the grip light have a positioning hole with a rubber grommet which is there for the exact same purpose. When installing the grip light each half of the grip must engage the pin on the revolver frame in order to ensure correct position and function.



Fit both halves to the gun frame, using the screw provided secure the grip assembly to the gun. Before tightening make sure that there is a flush fit at the seam around the perimeter of the grip. This will indicate that everything is in its proper place. Now tighten the screw until it is snug.

The switch on the butt end of the grip is the off / on power switch. It is suggested that this switch be kept in the off position until ready for use to avoid the possibility of draining the battery.

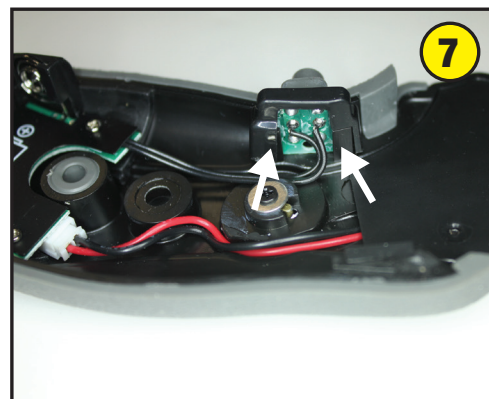


The button that is behind the trigger guard controls the light. With the power switch in the on position simply press the button and the light will illuminate.

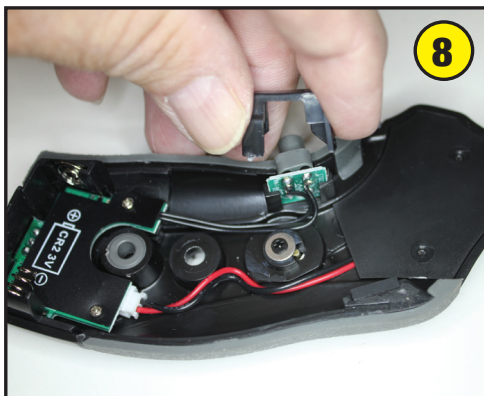
Operation is straight forward, with the gun pointed away from you and the power switch in the on position you will find you can operate the trigger with the forefinger and then the light by pressing on the button with the middle finger. Different people will have different opinions about how to illuminate their targets, therefore, we will not comment on that particular aspect. However, in order to ensure extend battery life, intermittent operation using short duration bursts of light would be the most effective.



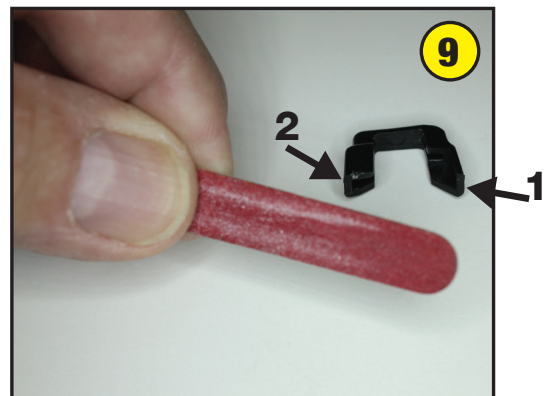
Over the many years that J frames have been manufactured you can rest assured that there have been minor changes in tolerance and dimensions. Therefore, we have manufactured our grip to fit the smallest frame, which means that some frames might be slightly (a few thousandths of an inch) wider at some points. (Note the arrows in the picture.) In that case the grip will appear not to fit. This is easily remedied with minor adjustments.



The adjustment that needs to take place is at the right hand corner and left hand face of the plastic clip used to retain the button assembly in place.



The retainer is mechanically held in place and can easily be removed with the thumbnail and forefinger. Please pay attention to which side is facing out as it is directional and it must be replaced with the same side facing outwards.



The adjustment is simple. Take a file (an emery board nail file will do) and with the fine side take 3 or 4 strokes on corner #1 and 3 or 4 strokes on face #2 then replace the clip and fit the gun into place. If it is still tight, with slight pressure force the frame of the gun against the recoil bumper (part A in Step #1), and you should be able to get the frame to fit into place. If not, use the file to remove a little bit more material from the clip. This should solve the problem.

• REPLACEMENT PARTS •

These are replacement parts for purchase. Pictures do not represent contents of set.

			
30265 - 1	30265 - 2	30265 - 3	30265 - 4
			
30265 - 5	30265 - 6	30265 - 7	30265 - 8
	Parts List: 30265 - 1 Cree® Led Diode Assembly.....\$ 18.50 30265 - 2 Lens\$ 7.50 30265 - 3 Lens Cap.....\$ 7.50 30265 - 4 Locating Grommet (2 Pcs)\$ 7.50 30265 - 5 Screw & Nut\$ 5.00 30265 - 6 Rotation Bumper\$ 5.00 30265 - 7 Cover Plate Set.....\$ 10.00 30265 - 8 Cover Plate Screws.....\$ 5.00 30265 - 9 Heat Sink.....\$ 5.00 30265 - 10 Retainer Clip\$ 5.00		
30265 - 9			
			
30265 - 10			

Send Check or Money Order with Phone Number to: **Power Aisle, Inc.**
 P.O. Box 983
 Middleburgh, NY 12122
 NYS Resident add 8.75% Sales Tax

**** \$10.00 Shipping & Handling to Lower 48 States****
**** \$25.00 Shipping & Handling to Alaska, Hawaii, Puerto Rico****

WARRANTY AND DISCLAIMERS

HYSKORE/Power Aisle, Inc. guarantees that its products are free from defects in material and workmanship for a period of 90 days from the original date of purchase. This Warranty applies to non-commercial use only. Commercial use voids this warranty. In the event of any defects in material or workmanship, HYSKORE/Power Aisle, Inc.'s sole liability therefore shall be the replacement of any such product(s) and/or components that are defective in material or workmanship. The replacement of any such product(s) and/or components shall be HYSKORE/Power Aisle, Inc.'s sole responsibility. This warranty specifically excludes any and all consequential or accidental damages. No other warranties or liabilities whatsoever are either expressed or implied. If any such warranties shall be imposed by law, not withstanding this provision, then such warranties shall be the responsibility of HYSKORE/Power Aisle, Inc.'s immediate buyer. There shall be no warranties of merchantability, use of trade, or fitness for a particular purpose. Alteration of any product, misuse, or exceeding any stated product limitations voids this warranty. All returns, adjustments, etc. are the responsibility of the retailer/dealer that sold the product. HYSKORE/Power Aisle, Inc. handles return issues through it's dealers. It should be obvious when using some of these products that approved protective safety gear, including, but not limited to, eye and ear protection, should be utilized. Using the appropriate safety gear is the sole responsibility of the person(s) using the product. It should also be obvious that certain products such as silica gel, etc. must not be consumed, inhaled or taken internally. The user takes full responsibility for inappropriate or incorrect use of these items. In the event an inadvertent event takes place, Material Safety Data Sheets (MSDS) are available on the HYSKORE® website. www.hyskore.com. We do not sell guns, scopes, ammunition, cleaning accessories, etc. These accessories are used in many of our product pictures, as props to illustrate how the products are used. As such, they are not included with any product. All photographs, drawings, copy, instructions, etc. are the exclusive property of HYSKORE/Power Aisle, Inc. All downloadable files are intended for the use of the end user of HYSKORE/Power Aisle, Inc.'s products and cannot be reproduced without the express written permission of HYSKORE/Power Aisle, Inc. ©2015