

Hyskore®

30290

# TARGET HOUND® MAX



The Hyskore® Target Hound® Max is a portable target support system that can adjust from 3" to 28" in width and accept both 2" x 4" and 1" x 2" dimensional wood uprights.

**In the course of shipping and packing, parts may end up missing or damaged- call us at 631.673.5975. 8:30 a.m - 5:00 p.m. Eastern Time. We will promptly send replacements.**

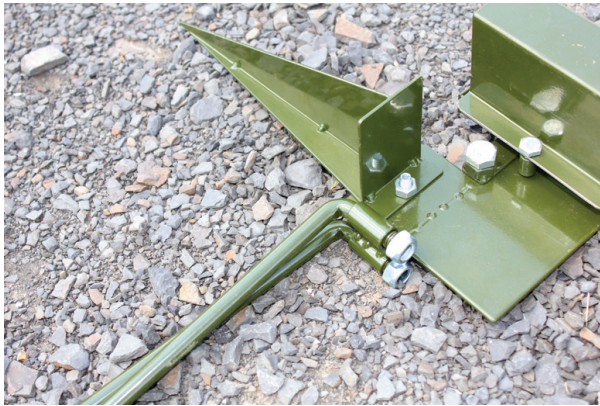
The Hyskore® Target Hound® Max has been designed to accommodate the needs of a wide range of shooters. This includes IPSIC and IDPA shooters and the growing number of shooters who have a place to shoot but need a support for their targets. This target support incorporates several unique and desirable features. It can adjust to accommodate targets from as narrow as 3" in width up to 28". Available targets generally come in 12", 15", 18", and 24" widths. This means that one fixture can accommodate the entire range of available targets. The set includes 2 ground stakes with foot pads that can be used for anchoring on turf or soft surfaces. In addition, it includes 4 outriggers that can be used on hard surfaces or to provide additional support from impact on soft surfaces. This set is designed to accommodate standard 1"x2" (nominal) lumber but it is also equipped to handle 2"x4" (nominal) lumber. This means that it will support steel gong type targets up to 8" in diameter. We neither recommend nor endorse the use of any target media that has the potential to cause a ricochet, deflection, or particle ejection. If you use this type of target you can expose yourself and others to serious consequences. Always make certain that there is an adequate backstop behind your target. Bullets can travel a long distance. The set is constructed from welded steel with a durable powder coat finish.

With the advent of the availability of guns and ammunition with substantially improved repeatability (aka accuracy) long range shooting is becoming an increasingly popular sport. With the Target Hound® Max it is now easy to deploy targets in the field for shooting at 100, 200, 300 and even greater ranges.

When engaged in any type of shooting related activity always use appropriate vision and hearing protection.



1



Mount the ground stakes (2) and the outrigger supports. Use the M-12 lock nuts for the outriggers - tighten until snug. If you are using the ground stakes, it is a good idea to use the outrigger also.

2



The brackets for the uprights can be set as close as 3".

3



The brackets for the uprights can be set as far as 28".

4



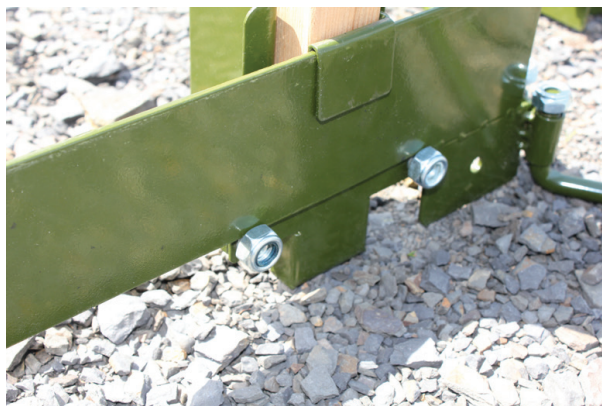
Hang the 2 universal brackets on the back side of the base. For 1" x 2" lumber mount the clamping plate as shown.

5



Set your spacing for uprights. Thread the 2 M-12 hex bolts as shown so that they extend under the base (towards the front).

6



Once you have finalized the spacing of the upright brackets, thread 2 M-12 hex nuts on to the bolts and tighten. This will hold the spacing and stabilize the brackets.

7



If you are using 1" x 2" uprights use a ratchet or wrench to tighten the clamping plate.

8



Use the "U" shaped clamp/bracket for 2" x 4" lumber. Tighten with a wrench. (There is not enough clearance for a socket).

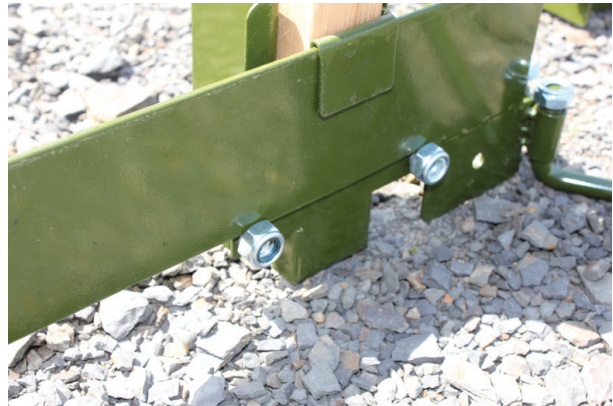


9



If you are using 2" x 4" lumber you probably intend to hang reactive targets. If this is the case, mount a spreader across the top and secure with screws. The spreader is also useful for hanging targets.

10



If you are shooting reactive targets make certain that the outriggers are firmly set in place. Tighten the nuts so that the outriggers do not shift during any impact.

11



If you are shooting reactive targets the base must be placed on soil or turf so that the ground stakes can be solidly set into the ground and the outriggers set front and rear. If you fail to follow this step, the bullet's impact can knock the entire stand over.

12



The ground stakes fold for transit and storage.

## **REMINDER ABOUT SHOOTING TARGETS**

1. Always make sure that guns are fired in a safe direction.
2. Always make sure there is an adequate backstop behind the target.
3. Always wear approved hearing and vision protection.
4. We neither endorse or recommend shooting at reactive, especially steel, targets that could cause deflection (ricochet) or particle ejection.

**ALWAYS THINK SAFETY !!!**

---

### **WARRANTY AND DISCLAIMERS**

HYSKORE®/Power Aisle, Inc. guarantees that its products are free from defects in material and workmanship for a period of 90 days from the original date of purchase. This Warranty applies to non-commercial use only. Commercial use voids this warranty. In the event of any defects in material or workmanship, HYSKORE®/Power Aisle, Inc.'s sole liability therefore shall be the replacement of any such product(s) and/or components that are defective in material or workmanship. The replacement of any such product(s) and/or components shall be HYSKORE®/Power Aisle, Inc.'s sole responsibility. This warranty specifically excludes any and all consequential or accidental damages. No other warranties or liabilities whatsoever are either expressed or implied. If any such warranties shall be imposed by law, notwithstanding this provision, then such warranties shall be the responsibility of HYSKORE®/Power Aisle, Inc.'s immediate buyer. There shall be no warranties of merchantability, use of trade, or fitness for a particular purpose. Alteration of any product, misuse, or exceeding any stated product limitations voids this warranty. All returns, adjustments, etc. are the responsibility of the retailer/dealer that sold the product. HYSKORE®/Power Aisle, Inc. handles return issues through its dealers. It should be obvious when using some of these products that approved protective safety gear, including, but not limited to, eye and ear protection, should be utilized. Using the appropriate safety gear is the sole responsibility of the person(s) using the product. It should also be obvious that certain products such as silica gel, etc. must not be consumed, inhaled or taken internally. The user takes full responsibility for inappropriate or incorrect use of these items. In the event an inadvertent event takes place, Material Safety Data Sheets (MSDS) are available on the HYSKORE® website. [www.hyskore.com](http://www.hyskore.com). We do not sell guns, scopes, ammunition, cleaning accessories, etc. These accessories are used in many of our product pictures, as props to illustrate how the products are used. As such, they are not included with any product. All photographs, drawings, copy, instructions, etc. are the exclusive property of HYSKORE®/Power Aisle, Inc. All downloadable files are intended for the use of the end user of HYSKORE®/Power Aisle, Inc.'s products and cannot be reproduced without the express written permission of HYSKORE®/Power Aisle, Inc. ©2016

# • REPLACEMENT PARTS •

These are replacement parts for purchase. Pictures do not represent contents of set.



30290 - 1



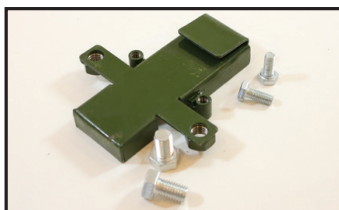
30290 - 2



30290 - 3



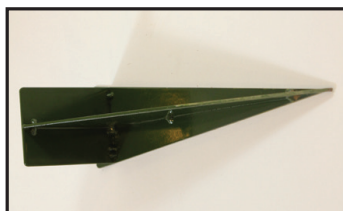
30290 - 4



30290 - 5



30290 - 6



30290 - 7



30290 - 8

## Parts List & Pricing:

30290 - 1	M-12 Nut & Bolt Set (4 nuts & 4 bolts) .....	\$ 7.50
30290 - 2	2" x 4" Bracket & Bolts .....	\$12.50
30290 - 3	M-8 Bolts (4 Pcs.) .....	\$ 7.50
30290 - 4	2" x 1" Clamping Plate & Bolts.....	\$ 7.50
30290 - 5	Universal Clamp Bracket & Bolts .....	\$15.00
30290 - 6	Outrigger & Nut .....	\$10.00
30290 - 7	Ground Stake.....	\$12.00
30290 - 8	M-12 Hex Nuts (4 Pcs.) .....	\$ 7.50

Visit our website for more information or to check our other great shooting accessories: [www.hyskore.com](http://www.hyskore.com)

Send Check or Money Order with Phone Number to:

**Hyskore® / Power Aisle, Inc.**

P.O. Box 983

Middleburgh, NY 12122

NYS Resident add 8.75% Sales Tax (or prevailing rate)

\*\* \$10.00 Shipping & Handling to  
Lower 48 States\*\*

\*\* \$25.00 Shipping & Handling to  
Alaska, Hawaii, Puerto Rico\*\*



30290

# TARGET HOUND<sup>®</sup> MAX

## Hyskore<sup>®</sup>

[www.hyskore.com](http://www.hyskore.com)



Hyskore<sup>®</sup> / Power Aisle, Inc. • P.O. Box 983 • Middleburgh, NY 12122